



St. Mary's Catholic Primary School

School Newsletter

Friday 7th January 2022

Morning Drop-off

All pupils (from Reception to Year 6) should arrive at school between 8.40 and 8.50am. Teachers will take the morning register shortly after 8.50am. Please use the green gate entrance on Rockingham Road.

Collection Times

All classes (Reception to Year 6) finish school at 3.15pm. Parents should access the school through the Rockingham Close entrance and then walk through the KS1 playground to leave through the green gate on Rockingham Road.

PE Days:

All classes have set days for PE and pupils should come into school wearing their PE kits on these days (they do not need to bring in their school uniform to get changed into after these lessons).

Dear Parent/Carer,

Welcome back! We hope you had a good rest over Christmas and that COVID didn't affect your time with your family. Based on the current situation, we anticipate that COVID may cause some disruption this term but we will do all we can to keep this to a minimum in school. Pupils should not come into school if they have symptoms, have had a positive test result or other reasons requiring them to stay at home due to the risk of them passing on COVID-19.

If anyone in school develops symptoms, however mild, they will be sent home and they should follow the latest public health advice. If well enough, pupils should study from home for the period of their isolation. Work will be set through your child's Google Classroom page. All absence should continue to be notified to our school office.

We plan to continue with our planned events but some of these (including our upcoming Parents' Evenings) will take place online. We are limiting visitors in school and all adults moving around communal areas will be asked to wear a face mask. We are also continuing with our enhanced hygiene routines.

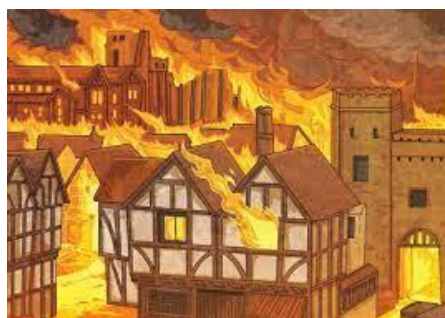
Our teachers returned to school on Tuesday and spent the day looking at our revised Relationship (RSE) planning followed by History curriculum development. We are looking forward to a busy Spring Term ahead. Please visit our school website for a full list of diary dates: <https://www.st-marys.hillingdon.sch.uk/>

One Way System (Pupil Collection)

Please continue to use our one-way system when collecting your child. Parents of pupils in Years 1 to 6 should exit school using the green gate on Rockingham Road to help keep social distancing. Only Early Years parents should leave school using the narrow alleyway from Rockingham Close.

School Office – Miss Becki

We hope you will join us in welcoming our new office assistant Miss Becki (who replaced Mrs Chavez last term). Miss Becki is a welcome addition to our administration team and was a fantastic help in the lead up to Christmas.



Year 2 Workshop

Our Year 2 pupils will take part in a Great Fire of London workshop today. This session, led by the National Archives, will look at using sources to find out about significant events – with a focus on the Great Fire. This workshop will support work the children covered in History last term.

HISTORY MYSTERY



Can you identify this object?

What do you think this object is?

Why do you think it was made?

When was it made?

Who made it?

How was it made?

You may like to talk to your child about what they think this object is - helping them to develop their enquiry skills. Older pupils may like to do some research.

We look forward to hearing about what pupils think this object might be!

Parents' Evenings

Our next Parents' Evenings will take place remotely throughout next week as follows:

Early Years (Nursery and Reception)	Tue 11 th and Thu 13 th January
KS1 (Years 1 and 2)	Tue 11 th and Thu 13 th January
KS2 (Years 3, 5 and 6)	Mon 10 th and Wed 12 th January

Your child's class teacher will ring you on your main contact number, between 2pm and 5.30pm, on one of the days listed above. **You may receive a call from an 'Unknown Number'**. Please let our school office staff know if any of these days/times are not convenient for you to take a telephone call. Your meeting will provide an opportunity to discuss how your child has been getting on and any planned targets (and support) for this term. If your child has a special educational need, their class teacher will also discuss their updated Individual Support Plan (IEP). This will be sent home before your meeting.

Mrs Kumar is currently away from school and will contact Year 4 parents regarding her meetings.

Start of Term Mass

A big thank you to Father Nicholas who led our start of term Mass yesterday. We would also like to thank all of the family members who joined us online.

UPCOMING EVENTS

For a complete list of dates (including TERM DATES) - please visit our school website:

<https://www.st-marys.hillingdon.sch.uk/>

Date	Event
Mon 10 th January	Start of Parents' Evenings
Fri 14 th January	Year 1 Theatre Workshop - 'Toys'
Mon 7 th February	Start of Children's Mental Health Week
Tue 8 th February	Safer Internet Day
Fri 11 th February	Last Day - Half Term
Mon 14th February	Start of Half Term Holiday
Mon 21 st February	Pupils return



Please remember to access and use the *real PE at home* website for great physical games and activities for the whole family to enjoy and to push your child on with their Physical Education! You can access the website by typing in "real jasmine active" in google and it is the very first website; or type the full address in:

<https://home.jasmineactive.com/login>.

All children have stuck in their username and password to their reading record/homework diary. Enjoy!

Stage Talent
Instrumental Lessons
Register Today!

Piano

Guitar

Singing

Cello

Flute

Violin

Book Your Free Lesson Now!
Register by Text: 07782 503 260
Stating: School + Instrument + Child's name + DOB
www.StageTalent.co.uk

The poster is titled 'Stage Talent Instrumental Lessons Register Today!' and features illustrations of children playing various instruments: a piano keyboard, a guitar, a girl singing, a cello, a flute, and a violin. At the bottom, it provides contact information for booking a free lesson, including a text number and a website URL.