



St. Mary's Catholic Primary School

School Newsletter

Friday 22nd November 2024

Morning Drop-off

All pupils (from Reception to Yr6) arrive from 8.40am via our Rockingham Road entrance.

This gate is locked at 8.45am each morning.

Collection Times

All classes (Reception to Year 6) finish school at 3.15pm.

Afternoon Nursery finishes at 3.30pm.

P.E. Lessons

Although each class is timetabled for PE lessons, this often changes due to wet weather and/or extra sports coach sessions. All pupils (Years 1 to 6) should bring their P.E kits into school **every Monday** and then take them home every Friday. Thank you.

Pupil Bags in School

We ask that pupils only bring in book bags (and draw string P.E bags for their P.E uniform). Each child only has a single peg for these bags (in most cases in the main corridor) and we do not have the space for large rucksacks or other similar bags. Thank you in advance.



Dear Parent/Carer,

Year 5 visited Uxbridge Leisure Centre, every morning, this week to take part in an intensive course of swimming lessons.

On Monday afternoon, our Year 3 pupils were visited by a representative from the Freshwater Theatre company who led them on a journey back in time to meet Britain's earliest residents from prehistory. Using activities such as role-play and tableaux, pupils discovered what life was like in early Britain, experiencing life as hunter gatherers and early farmers. Then, moving through time to the Iron Age, they visited an iron forge, met druids and received a message from the Chieftain.

We were visited by the Hillingdon NHS Team (on Wednesday) who gave the flu vaccine to the children of all the parents who had signed their child up to receive it.

This afternoon our Year 2 pupils attended a free workshop led by a representative from the National Archives looking at what we know about the Great Fire of London from a range of different historical sources.

Wear Blue to School

We are celebrating World Children's Day, next week, on Monday 25th November. World Children's Day is UNICEF's global day of action for children, by children, marking the adoption of the Convention on the Rights of the Child.

To help celebrate this special day, we are inviting all pupils to wear BLUE coloured non-uniform clothes to school (25th Nov) to show support for child rights.

We have also planned lots of other activities to mark this day including an assembly looking at children's rights and a whole school initiative respecting how we are all different and sending 'compliment' slips to a different child in each class each week.



Parent Coffee Morning – Meet an OT

We are holding our next parent Coffee Morning next **Thursday 28th November from 8:45am** (after the morning drop off) in our school Hall.

Caroline McHugh (an Occupational Therapist and lecturer from Brunel University) will give an introduction to occupational therapy. She will be joined by two of our Brunel Students (Liat and Tatiana) who are training to be Occupational Therapists (OTs) in our school.

Occupational therapy aims to improve your ability to do everyday tasks if you are having difficulties. We have OT's who work closely with our school supporting pupils who are experiencing difficulties with handwriting, scissor control, dressing, movement in PE etc.

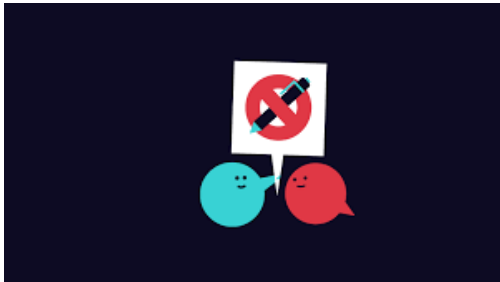
Caroline will also share some practical strategies that can be used at home and signpost parents to where they can go for further help if they have concerns. We hope you can join us, Mr Ellis

Christmas Events in School

Thu 12 th December	Early Years (Nursery and Reception) Christmas Production for all parents at 2.15pm – school Hall
Tue 17 th December	Carol Concert (in Church) at 4pm – led by Year 3
Wed 18 th December	KS1 (Years 1 and 2) Christmas Production for all parents 2.15pm – school Hall
Thu 19 th December	Year 4 Carols for Parents – 2.30pm followed by refreshments and mince pies – school Hall
Fri 20th December	TERM ENDS at 12.15pm

UCL Research

A big thank you to all of the Years 2 and 3 parents who signed their child up to take part in this year's project with UCL researchers. Following on from last year's research looking at handwriting, this second stage will look at how memory and confidence impacts children's motor skills such as using scissors and pencils and how these skills help literacy development.



No Pens Day

Next Friday is the National No Pens Day. It's a chance for children to put their pens down, talk, listen, and take part in lots of pen-free activities, all whilst promoting the importance of speech and language skills. Each class has planned different activities ranging from debates to performance poetry.

Year 6 Test Week

All classes will complete end of term tests in English and Maths over the next few weeks. Year 6 will complete their tests next week. On Monday they will work on English tests followed by Maths papers on Tuesday and Thursday. Wednesday will be a revision morning and on Friday our Year 6 pupils are going on their trip to the Science Museum in London.

Kooth

Kooth.com, NHS-commissioned and BACP accredited, offers free, safe and anonymous online mental health support and counselling for 11-25 year olds across north central London.

<https://www.kooth.com/>

School Lunches – now 6 weeks in advance

You can now order your child's school lunches up to 6 weeks in advance.

Please continue to order online through the iPay website:

<https://www.ipayimpact.co.uk/IPI/Account/LogOn>

Starting Reception School 2025

If you have a child born between 1st September 2020 and 31st August 2021, you must apply for your child to start Reception in September 2025.

If you regularly attend Our Lady of Lourdes church and your child has been baptised, the CCP school forms can be signed on the following dates only: -

Friday 15th November 2024- 3:30pm – 5:30pm

Saturday 16th November 2024 – 11:30 am – 1.00pm

You must apply by: 15st January 2025 – further information on to the links below:

www.hillingdon.gov/schooladmissions or email admissions@hillingdon.gov.uk.

You also need to fill the Supplementary forms for our school that can be obtained from the school website or the school office.

For the Nursery Children, the CCP school forms, for Nursery 2025, can be signed on the following dates: -

Friday 10th January 2025 – 3pm – 5:30pm

Saturday 11th January 2025- 11:30am _ 12:30pm

Place2Be – Parenting Smart

The Parenting Smart website is open to all parents and includes practical tips to support children's wellbeing and behaviour:

<https://parentingsmart.place2be.org.uk/index>



Age Restrictions on Social Media

Pupils cover work on online safety every term. We have been reminding our KS2 children of these age restrictions on social media.

Getting in Contact

Tel: 01895 232814

Email: office@stmarysuxbridge.org.uk

All enquiries should be referred to our school office

For Special Educational Needs: Mr Ellis (using the contact details above)

Chair of Governors: Mrs Maureen Thorpe (using the contact details above)

Amazon Wish List – School Supplies

Please help support our school by donating school supplies from our Amazon Wish List <https://amzn.eu/fgZpVLv>

Any purchase would be greatly appreciated.

School Friend Clubs -our onsite breakfast and after school club provider:

Website: www.schoolfriendclub.com

Booking portal: <https://schoolfriendclub.magicbooking.co.uk>

Tel: 0333 355 7374

Safeguarding Our Children

If you are worried about a child's safety please do not hesitate to contact the school straight away. You can always speak to Miss Shevlin, the Designated Safeguarding lead, if you have any concerns about a child. You can also call Hillingdon Stronger Families Hub on [01895 556006](tel:01895556006). If a child is in immediate danger, call the Police immediately on 999.

It is all our responsibility to safeguard children

Useful SEN Websites and Information

Hillingdon SENDIASS website: Hillingdon SENDIASS is a free, confidential and impartial support service for parents and carers, children and young people up to 25 years where the child or young person has or may have special educational needs. Their website includes useful information and links to a range of support groups available:

<https://www.hillingdonsendiass.co.uk/>

Hillingdon Local Offer

The Hillingdon local offer provides information for children and young people with special educational needs and disabilities (SEND) and their parents/carers. It allows families to see what they can expect from a range of local agencies and how to access them.

<https://www.hillingdon.gov.uk/article/4654/SEND-local-offer>

Hillingdon Talks, Moves, Plays

Hillingdon Talks, Moves, Plays: Children's Integrated Therapy Service (CITS) is a team of Speech and Language Therapists, Physiotherapists, Occupational Therapists, technicians and administrators, who deliver a community service for children and young people aged 0 to 19. CITS operates an open referral system, which means anyone can refer a child or young person to any of the therapy services.

We recommend parents, carers and professionals contact the advice line on 01895 488 200 to speak with a therapist for advice and to decide whether a referral is needed.

You can find further information and parent advice on their website:

<https://www.cnwl.nhs.uk/children-integrated-therapy-service>

Hillingdon Autistic Care and Support (HACs)

A charity providing support for children with a diagnosis of autism and their families:

<https://www.hacs.org.uk/>

Stronger Families Hub

The Stronger Families Hub operates 24 hours a day, 7 days a week to provide families in Hillingdon with information, advice and support.

<https://www.hillingdon.gov.uk/stronger-families-hub>

Hillingdon Parent Carer Forum (PCF)

A team of volunteer parents/carers whose aim is to improve services and processes for Hillingdon SEND children. They exist to harvest the voice of parents/carers in Hillingdon, to help shape the services accessed by SEND children, by way of engagement with parents and co-production with the Local Authority.

If you wish to receive information emails, please sign up to their database. They have different levels of volunteering options:

<https://hillingdonpcf.com/>

Speech Link – Parent Portal

Speech and language support for parents and carers:

<https://speechandlanguage.info/parents>

Tiny Happy People

The BBC's Tiny Happy People website is here to help you develop your child's language skills. Explore our simple activities and play ideas and find out about babies and toddlers' amazing early development:

<https://www.bbc.co.uk/tiny-happy-people>

Children's Centres

Children's centres offer a range of services to support parent/carers and 0 to 5-year-olds.

You can view the Hillingdon centres here:

Instrumental Lessons

Instrumental lessons

Book a Free one-to-one Music Lesson

For children aged 4+ wishing to learn piano, guitar, ukulele and violin at our school.

Register by text to: 07782503260 and include:

Child's Name, Age, Music Instrument

Or

register at: www.stage talent.co.uk/register



Attendance

We are sure that like us, you as parents and carers, realise the importance of attendance and punctuality. At St. Mary's, we continue to work hard to try to raise attendance levels and to reduce instances of lateness. There is much evidence to show that good attendance plays a vital role in helping your child to achieve their potential. We also know that poor attendance can lead to other problems for children. How can you help your child attend school regularly?

- Talk to your child about school. Make sure your child understands why school is important;
- Get everything ready for school the night before;
- Arrange appointments before or after school or during the school holidays;
- Take holidays during school holidays and not during term time;
- Set your alarm and your child's alarm clock- see who can beat the clock!
- Only grant days at home for genuine illness (you will know!)
 - If your child is slightly under the weather, still send them into school- children often start feeling better as the day goes on and they get busy, and if the school is worried, we will call you.

House Point Winners this week:	St. Francis	480
---	--------------------	------------

UPCOMING EVENTS - Autumn Term Dates 2024

Date	Event
25/11/24	Test Week -Year 6
29/11/24	National No Pens Day
02/12/24 - 06/12/24	Test Week (Years 1 to 5)
12/12/24	Early Years Christmas Production (2:15pm)
17/12/24	Carol Concert in the Church for the whole school at 4pm. Year 3 will lead the carol concert.
18/12/24	KS1 Christmas Production (2:15pm)
20/12/24	End of term. Finish at 12:15pm (no hot lunch)
06/01/25	School opens - start of Spring Term 2025

Please visit our school website for Term dates:

<https://www.st-marys.hillingdon.sch.uk/page/?title=Term+Dates&pid=45>